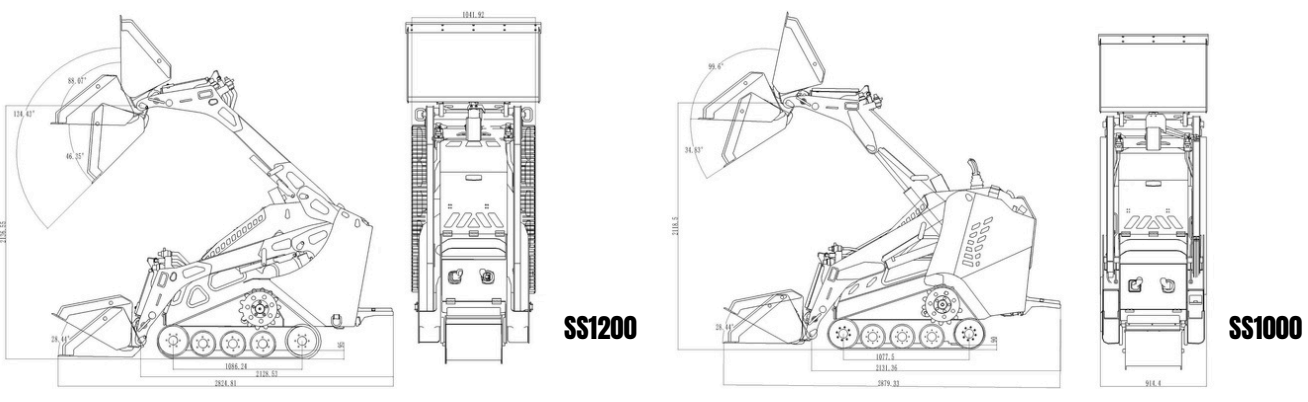


ENGINE	SS 1200	SS 1000
ENGINE TYPE	Water cooled 4 cycle diesel engine with 3-cylinder, EPA Tier 4	
MODEL NAME	KUBOTA D1703-M	
TOTAL DISPLACEMENT	100.5 cu.in. (1,647 cm <sup>3</sup> )	
ENGINE POWER SAE J1995 GROSS	24.8 HP (18.5 kw/rpm)	
RATED SPEED	2,200 rpm	
LOW IDLING SPEED	1,100 rpm	
DIMENSIONS		
OVERALL LENGTH-TRANSPORT (W/STD BUCKET PARALLEL TO GROUND)	111.1" (2,824 mm)	113.9" (2,879 mm)
OVERALL LENGTH (W/O BUCKET)	83.7" (2,128 mm)	83.9" (2,130 mm)
OVERALL HEIGHT	61" (1,540 mm)	65.7" (1,670 mm)
OVERALL WIDTH	41" (1,042 mm)	36" (914 mm)
OPERATING WEIGHT (W/O OPERATOR)	3,527 lbs (1,600 kg)	3,527 lbs (1,600 kg)
RATED OPERATING CAPACITY (35%)	1,200 lbs (544 kg)	1,200 lbs (544 kg)
TIPPING LOAD	3,429 lbs (1,555 kg)	3,429 lbs (1,555kg)
WHEELBASE	42.9" (1,090 mm)	42.5" (1,080 mm)
HINGE PIN HEIGHT AT MAX. LEFT	84.3" (2,140 mm)	83.5" (2,120 mm)
REACH AT MAX. LEFT AND 45° DUMP	16.7" (425 mm)	23.2" (590 mm)
TRACK WIDTH	9.1" (230 mm)	7.8" (200 mm)
GROUND CLEARANCE	11" (279 mm)	14.9" (380 mm)
ANGLE OF DEPARTURE	31°	30°
PERFORMANCE		
ATTACHMENT MOUNTING SYSTEM	CII (Common Industry Interface) or 2 Lever Quick-Attach	
TRAVEL SPEED (FWD/REV)	4.94 mph (7.96 km/h)	
BATTERY CAPACITY	12V, 60Ah	
AUXILIARY HYDRAULIC FLOW	11 gal/min (41.8 L/min)	
SECONDARY AUXILIARY HYDRAULIC FLOW	2.6 gal/min (9.9 L/min)	
AUXILIARY HYDRAULIC PRESSURE	2,755 psi (19 mPa)	
SERVICE AND FILL CAPACITIES		
FUEL TANK CAPACITY	8.5 gal (32L)	
HYDRAULIC SYSTEM	8.5 gal (32L)	



**SS 1000 & SS 1200  
MINI TRACK LOADER**



## Spartan SS1000

36" Wide  
Same Power,  
More Accessibility.



## Spartan SS1200

42" Wide  
More Stability,  
More Potential.

# ELEVATE YOU INTO WARRIORS

Unleash the Power, Empowering Every Move.

## 1,200lbs Rated Operating Capacity



## High Flow Option 15.9gal/min

**Engine** Kubota D1703

**24.8 HP 18.5 kW Power**

**97.4 Nm 71.8lb-ft TORQUE**

**2,200 rpm**

**Unmatchable fuel efficiency**

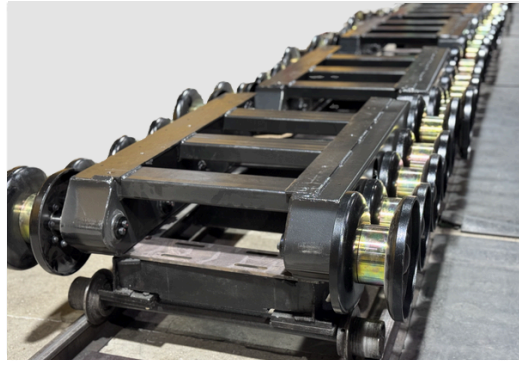


## Driving Motor

**POCLAIN PLUNGER DRIVING MOTOR**

**Constant High Pressure Output**

**Unbeatable Breaking Force**



## TANK STYLE CHASSIS SYSTEM

The independent chassis, with a tank-style design, evenly distributes weight for enhanced stability and durability, while anti-vibration tracks improve comfort and reduce operator fatigue.



## Higher Platform clearer view Reduced blind spots

Easily change attachments to adapt to any task, staying in control and fully aware of everything happening on your job site.

## Heavy Duty Cast Iron CII Mounting plate

With strong load resistance and wear reduction, this design enhances durability, minimizes maintenance, and ensures seamless compatibility with CII and other brands.



## Hydraulic Joystick Control

The ergonomic grip fits the natural hand curve, while the intuitive dual-hand layout and multi-function joystick controls simplify operation and reduce unnecessary movements.



## Powder coated finishing

With a smooth, rust-resistant finish that resists scratches, it maintains a lasting, professional look for a tough and polished appearance.



## Password Keyless Start

- Preventing loss or theft
- Optional Key start

## Digital Monitor Screen

- Displays real-time data
- Clear and intuitive for operation

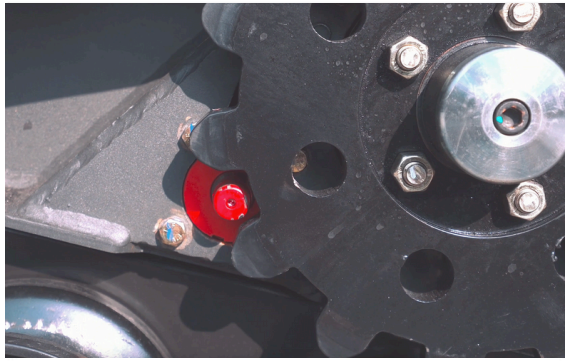
## Heavy Duty Boom

The heavy-duty boom with protected internal hydraulic lines offers enhanced durability, making it ideal for high-intensity tasks with greater longevity and reduced maintenance needs.



## Standard Duo Auxiliary

Dual auxiliary ports offering both high and low flow, delivering powerful performance with precise control. Quick-release mechanism ensures effortless attachment changes.



### Parking Lock & Boom Lock

The parking lock secures the machine during breaks, while the boom lock prevents unintended movements for added safety.



### Secure Tie Down Point for Transport

Provides secure anchor points to keep the loader stable during transport, preventing movement or shifting on trailers.



### Emergency Kill Switch

Instantly shuts down the machine in case of emergencies.

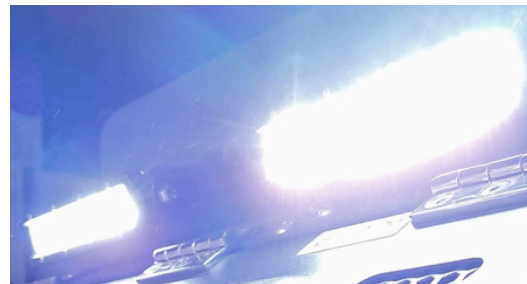
### LED HEAD LIGHTS

Boost visibility and safety in low light, ensuring confident navigation in the dark.



### 3-Point Contact

Guarding you on every climb, the 3-point contact system ensures safety when getting on and off.



### Comfortable Working Platform, With Soft Cushion



### Durable and anti-vibration tracks



### 12V Charging Port

### Standing Platform

Durable suspension springs absorb shocks and vibrations, providing a steady and balanced platform for enhanced stability.

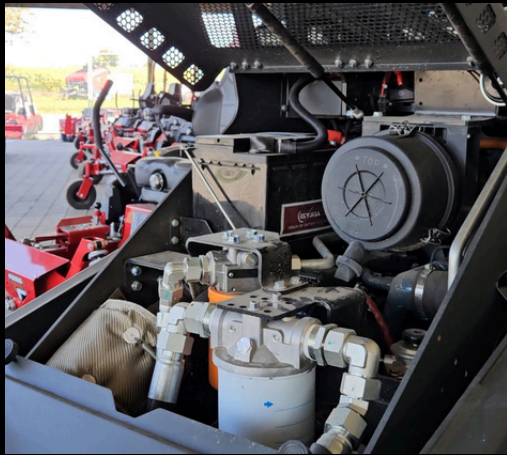


### Hose Guide

Protects hoses from external impacts and friction wear, ensuring proper alignment for smooth hydraulic flow and extended lifespan.



### Floating Function



**Easy Access to the Engine Bay**



**Oil Change?**

**Just Take off One panel !**



**Grease Point Across the Body**



**Service Free Rollers Grease Tensioning Tracks**



# 2-Years / 2,000hrs Warranty\*

**\*Includes Labour and Parts**

## Comprehensive Coverage

The warranty covers both labour and parts, ensuring your machine is protected from manufacturing defects or unexpected issues during the warranty period.

## Extended Peace of Mind

Whether you work long hours or over multiple years, this dual-condition warranty ensures reliability and support for up to 2 years or 2,000 hours of use, whichever comes first.

## Dealer Support

Experience exceptional service with VEMENG's expert dealers, backed by factory training and efficient inventory management. Enjoy comprehensive support, prompt assistance, and access to reliable full-time technicians, all supported by a well-stocked inventory.



**Angle Broom**



**Dozer Blade**



**Snow Blower**



**Sweeper**



**4in1 Bucket**



**Hammer**



**Lawn Mower**



**Soil conditioner**



**Pallet Fork**



**Trencher**



**Auger**



**Digger**



**Root Grapple**



**Stump Grinder**



**Log Grapple**



**Rock Bucket**



**Leveller**



**Rotary Plow**



**Backhoe**



**Mixer**



**Unleash the full potential of Spartan with our wide range of official Attachments!**

**For a full list of attachments visit [www.vmengmachinery.com](http://www.vmengmachinery.com)**